

GENERAL INFORMATION

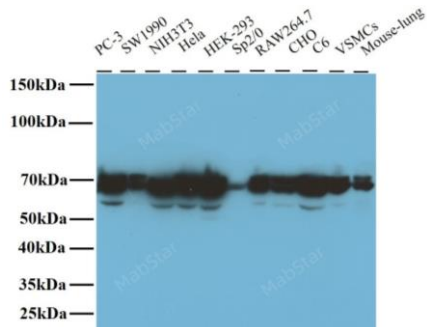
Antibody Type	Mouse Monoclonal Antibody
Reactivity	Human/Mouse/Rat
Uniprot	P02545
Calculated MW	65kDa
Observed MW:	65kDa,70kDa
Immunogen	Recombinant protein of human Lamin A/C
Clone ID	12F1
Isotype	IgG1, Kappa
Concentration	1mg/ml
Purification	Protein G purification
Storage Buffer	PBS buffer with 0.02% sodium azide and 50% glycerol pH7.3
Storage	This antibody can be stored at -20°C; Stable for one year after shipment without detectable loss of activity. Avoid repeated freeze-thaw cycles.

APPLICATIONS

Tested Applications	ELISA, WB, IP, IF, IHC
Recommended Dilutions	WB 1:5000-50000
	IP 1-4ug for IP
	IF 1:200-1:500
Note	Optimal concentrations/dilutions should be determined by the end user.

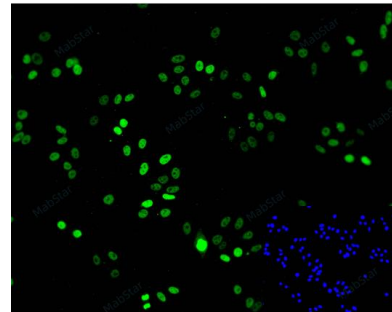
PARTIAL VALIDATION DATA

Western Blot



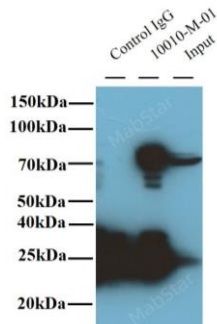
Western blot analysis of Lamin A/C in various cell lines using Lamin A/C antibody (10010-M01) at a dilution of 1:10000 (exposed for 1 seconds) incubated at room temperature for 1 hours.

Immunocytochemistry



Immunofluorescent analysis of HepG2 cells using Lamin A/C antibody (10010-M01) at dilution of 1:200 and Alexa Fluor 488-conjugated AffiniPure Goat Anti-Mouse IgG (H+L).

Immunoprecipitation



IP test results, 1mg mouse brain tissue lysate and 2ug Lamin A/C antibody (10010-M01) were used for precipitation. The precipitated samples were detected with Lamin A/C antibody (10010-M01) WB at a dilution of 1:5000.

BACKGROUND INFORMATION

Lamins are components of the nuclear lamina, a fibrous layer on the nucleoplasmic side of the inner nuclear membrane, which is thought to provide a framework for the nuclear envelope and may also interact with chromatin. Plays an important role in nuclear assembly, chromatin organization, nuclear membrane and telomere dynamics. Required for normal development of peripheral nervous system and skeletal muscle and for muscle satellite cell proliferation. Lamin A/C Antibody (10010-M01) is an IgG1 κ mouse monoclonal Lamin A/C antibody (also designated LMNA antibody or LMNC antibody) that detects the Lamin A/C protein of mouse, rat and human origin by WB, IP, IF, and ELISA.

Mabstar Antibody Technology (Wuhan) Co., LTD

FOR RESEARCH USE ONLY. NOT FOR USE IN HUMANS.